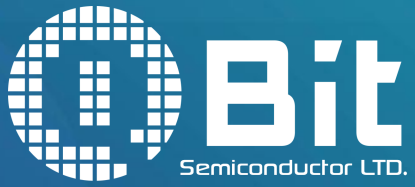




Bit

Semiconductor LTD.



TWO : 7913

QBit Semiconductor Ltd.

Investor Presentation

- This presentation contains forward-looking statements concerning our operational outlook, financial forecasts, and business development. Such statements are based on the QBit's current expectations and projections for future events. However, actual results may differ materially from those expressed or implied in these forward-looking statements due to various uncontrollable risks and uncertainties, including but not limited to industry volatility, market demand, and supply chain conditions.
- The forward-looking views expressed herein reflect the QBit's stance as of the date of this presentation. Except as required by law, the Company assumes no obligation to update or revise any forward-looking statements, whether as a result of new information, future events, or subsequent changes in circumstances.



Chairman/CEO/Founder: Simon Shen



Date of Incorporation: July 20, 2016



Core Product: SoC

Integration Solutions and IC Product Design



Number of Employees: 68 (Including 13 in the U.S.)



Paid-In Capital: NT\$ 451,387 thousand



Emerging Stock Market Listing Date: May 15, 2026

Expected Main Board Listing Application: H2 2026

2016

- Company Founded
- R&D technology and core team primarily originated from Qualcomm image processing team

2020/2021

- QB63xx SoC series entered mass production.
- Achieved one million units in cumulative sales.

2018

- Completed QB63xx SoC design.
- (TSMC 28 nm process)

2023

- QB66xx SoC series entered mass production using TSMC 28nm process.
- High-end QB7xxx SoC project officially kicked off, featuring ARM A76 processors and TSMC 12nm process.

2025

- Completed Series A funding
- Passed ISO 9001 International Quality Management Standard.
- QB7xxx SoC successfully passed PQC ML-DSA cryptographic algorithm certification (CAVP).
- Obtained Sony' s Green Partner certification.
- QB7xxx SoC Tape-out at TSMC.
- QB2xxx SoC project officially kicked off

2026

- Completed Series B funding
- Post-funding paid-in capital: NT\$ 437,837,000.
- Expected ESB listing: May 15, 2026.
- Expected Main Board listing: H2 2026.

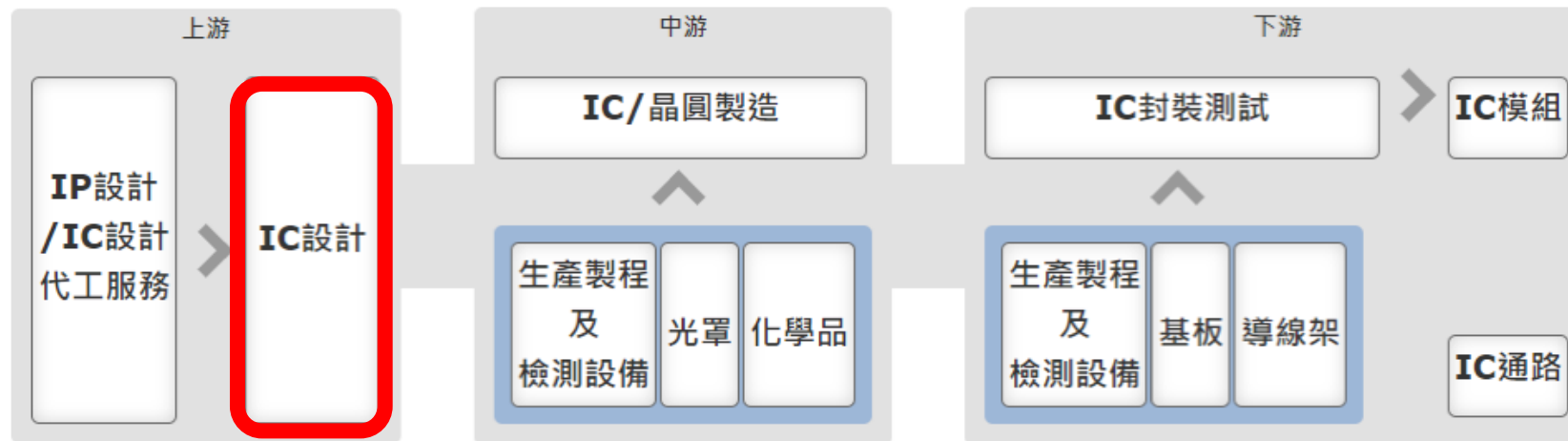
Major Shareholders

Shareholder	Ratio (As of March 31, 2026)
ABObridge Corporation (Simon Shen, Director)	46.97%
Long-Win Investments (Simon Shen)	12.81%
ABV II Holding Co Ltd	12.53%
AB Value GP 1	5.40%
Sheng Bang Investment Corporation (Faraday)	4.57%
National Development Fund Trust Account	2.74%
ARM Limited	2.08%
Jesica Pan (Director)	1.60%
TAIFER INVESTMENT CORPORATION	1.37%
Industrial Technology Investment Corporation	1.14%

職稱	姓名	主要學歷	主要經歷
Founder, Chairman & CEO	沈軾榮 Simon Shen	<ul style="list-style-type: none"> ● Juris Doctor degree, Whittier Law School ● MBA, University of Southern California 	<ul style="list-style-type: none"> ● California licensed Attorney ● CEO of the Kinpo Group ● Vice Chairman & CEO of Cal-Comp Electronics ● Founder of QBit Semiconductor Ltd.
CPO/ GM of QBit US	Neil Epstein	<ul style="list-style-type: none"> ● Master' s Degree in Computer Engineering, Boston University, USA ● MBA, Babson College 	<ul style="list-style-type: none"> ● Senior Director of Product Marketing, Qualcomm ● CPO / GM - QBit Semiconductor (USA) Ltd.
CMO	潘修玉 Jesica Pan	<ul style="list-style-type: none"> ● NYU Master Degree (Polytechnic Institute) 	<ul style="list-style-type: none"> ● CMO of New Kinpo Group ● GM of Broadband, Pegatron ● Broadband Director of Asus
Senior Director of SoC Engineering	Mark Busa	<ul style="list-style-type: none"> ● Master of Science in Electrical Engineering, Worcester Polytechnic Institute 	<ul style="list-style-type: none"> ● Director SoC Engineering, Qualcomm ● Director ASIC Engineering, CSR ● Senior Director of R&D Department - Cal-Comp Electronics (USA) Co., Ltd
CFO	李婉榕 Amber Lee	<ul style="list-style-type: none"> ● Bachelor of Accounting, Chung Yuan Christian University 	<ul style="list-style-type: none"> ● Management Executive of Cal-Comp Electronics ● Management Executive of Pegatron
Audit supervisor	徐蕙心 Lucy Hsu	<ul style="list-style-type: none"> ● Bachelor of Science in Finance and Taxation, National Chung Hsing University 	<ul style="list-style-type: none"> ● Audit Assistant, Fullon Hotel Co., Ltd. ● Audit Supervisor, Elumax International Co., Ltd. ● Consultant, Moores Rowland CPAs

QBit: Strategic Industry Positioning

- **Strategic Position:** A leading upstream IC design house and a key focus of national industrial growth.
- **Supply Chain Synergy:** Leveraging world-class local partners (TSMC, ASE, PTI) to reinforce Taiwan's semiconductor competitive edge.
- **Core Expertise:** Dedicated to SoC development for **Intelligent Image Processing** and **Precision Motion Control**.
- **Diverse Applications:** From MFPs and printers to high-end medical and smart retail devices, offering high integration and stability.

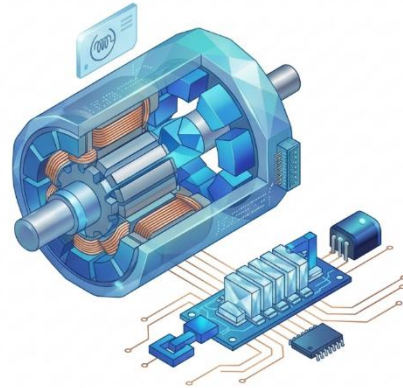


(資料來源：產業價值鏈資訊平台)



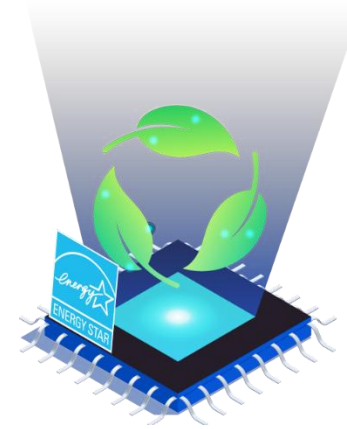
Intelligent Image Processing

OCR & Text Recognition
AI Algorithm



Precision Motion Control

Signal Synchronization
Seamless Integration



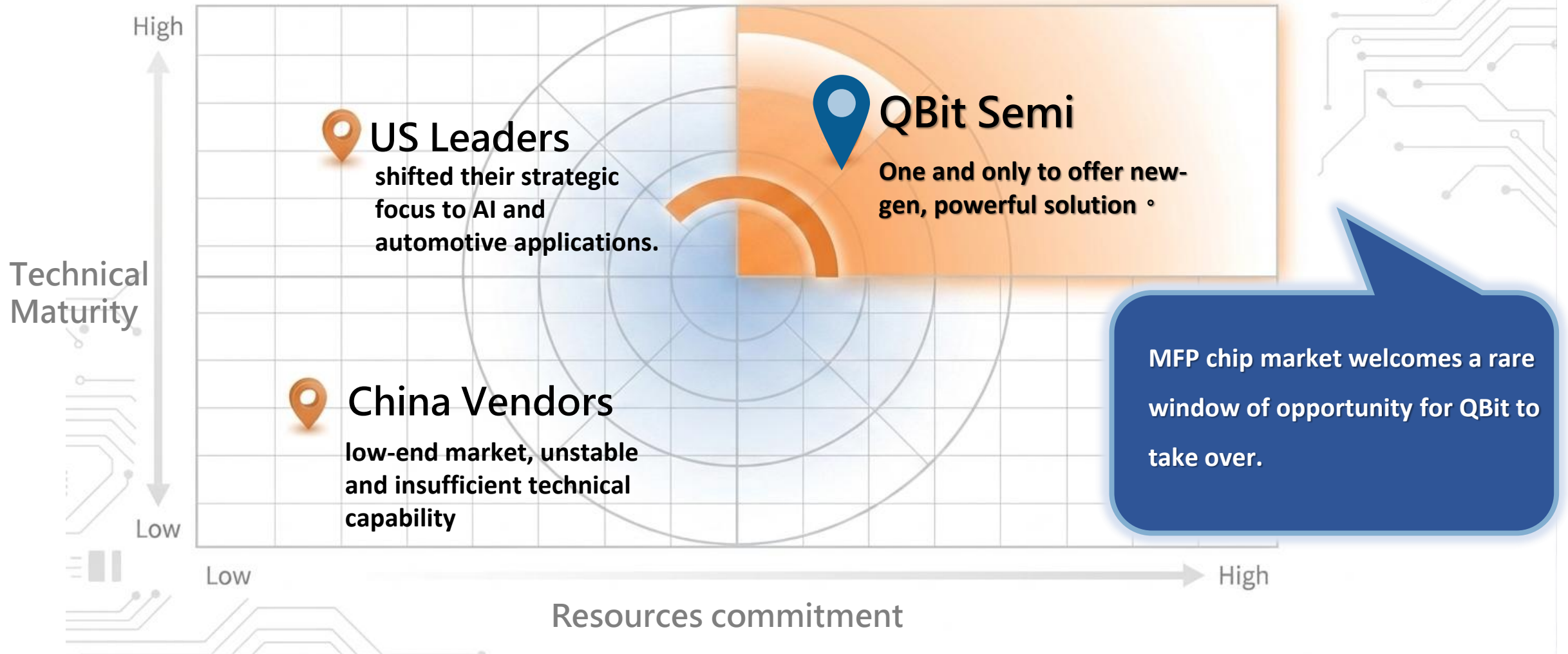
Energy-Aware Sensing Management

Ultra-Low Power Consumption
Always-on Sensing

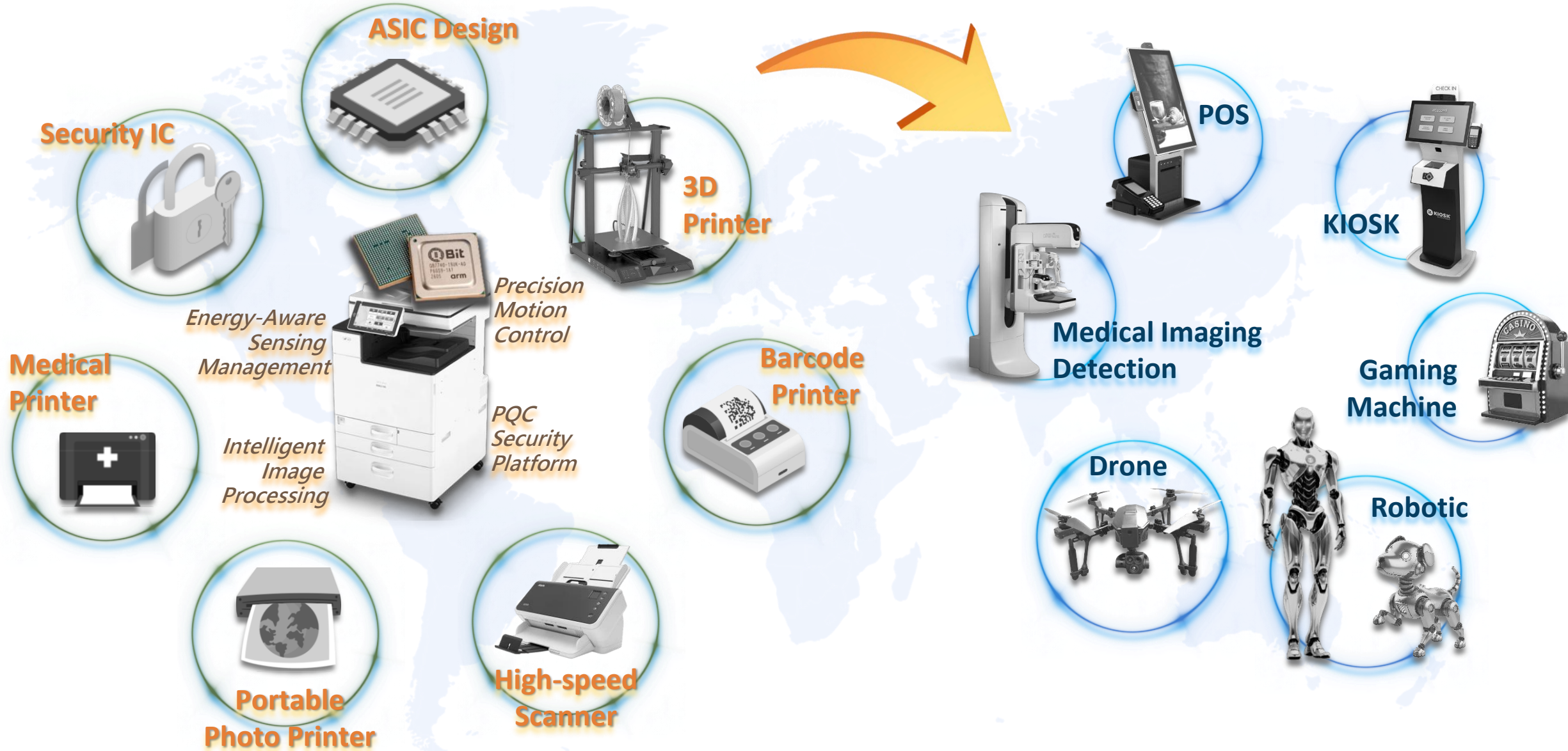


Cybersecurity Defense Platform

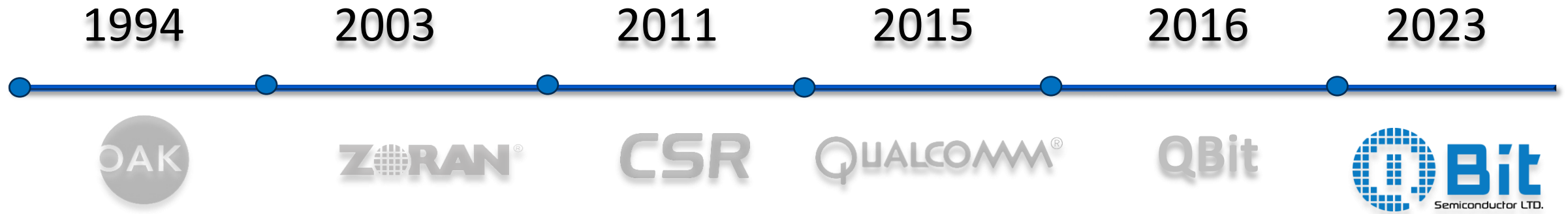
Dual-Layer Security
PQC Authentication



QBit Strategic Growth Roadmap



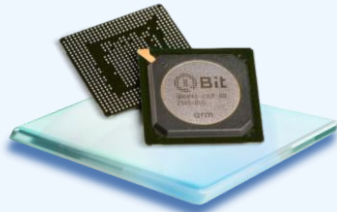
QBit R&D Team and Experience



- QBit was established in 2016, formed by a team of imaging technology experts from Qualcomm. The roots of QBit trace back to 1990 with the founding of "Pixel Magic" in Boston. Over the years, the company underwent several acquisitions: by OAK, Zoran, CSR, and finally by Qualcomm in 2015. In 2016, the energetic QBit team spun off as an independent entity.
- **R&D professionals account for over 70% of the total workforce.**
R&D centers strategically located in Taiwan, Boston (USA), and Tokyo (Japan).
- Integrated team with diverse backgrounds in **Digital/Analog IC Design, SoC Integration, Simulation Verification, and System Application Development.**
Team members average **15+ years** of experience, with a proven history of leading multiple controller SoCs from design to successful mass production.

QB6 Series

- **TSMC 28nm Process:** Low-power, high-performance design.
- **Enhanced Image Quality:** Advanced segmentation of text and graphics.
- **Flexible Planning:** Highly adaptable for various applications.
- **Programmable Interface:** Direct control for all printers and scanners.



Model Numbers

- QB6640-23UF / QB6620-23UF
- QB6310-14PA/14LA/14LB/19UC
- QB6320-19UC/19UD/19UE

QB7 Series

- **Powerful Computing:** Arm® Cortex®-A76 Quad-Core, GPU acceleration, and AI imaging unit.
- **TSMC 12nm Process:** Advanced node with ultra-low power design.
- **Leading Security:** Industry-first PQC (Post-Quantum Cryptography) for top-tier defense.
- **Status:** Engineering samples ready; mass production expected in **2027**.



Model Numbers

- QB7740-19UK
- QB7720-19UF

QB2 Series

- **Unified Technology:** Based on the proven QBit series technical platform.
- **Core Features:** Low-power design with integrated cybersecurity.
- **Specialized Printing:** Supports Dye-Sublimation (Dye-Sub) color photo printing.
- **Status:** Mass production expected in **2027**.



Model Numbers

- QB2x-15
- QB2x-13

QB1 Series

- **Arm® Cortex®-M4F Core:** 32-bit MCU with high-performance speeds of 120–288MHz.
- **Mature Process Optimization:** Low-power, compact, and cost-effective design.
- **Precision Motion Control:** Comprehensive Timer functions for real-time motor synchronization.
- **Versatile Connectivity:** Optimized peripheral interfaces for diverse applications.



Model Numbers

- QB1421
- QB1455

Quatro Series

- **Standard Arm® CPU:** Industry-standard processing performance.
- **Integrated Networking:** Built-in USB and Ethernet connectivity.
- **Custom DSP Engine:** Tailored algorithms for image processing.
- **Mechanism Control:** Direct printer and scanner management via Cortex®-M3.
- **Analog Integration:** On-chip circuitry for reduced system complexity.



Model Numbers

- QC53xx
- QC55xx

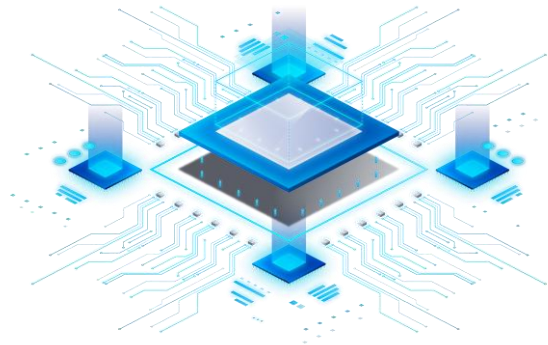
QS6 Series

- **Octa-Core Arm® CPU:** Dual-cluster A73 and A55 architecture.
- **Dedicated NPU:** Optimized for Edge AI and machine learning.
- **GPU Engine:** Integrated support for 2D/3D graphics acceleration.
- **Multimedia Support:** Comprehensive audio/video interfaces and codecs.

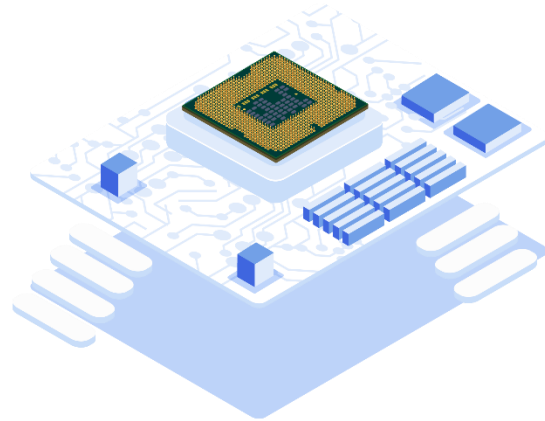


Model Numbers

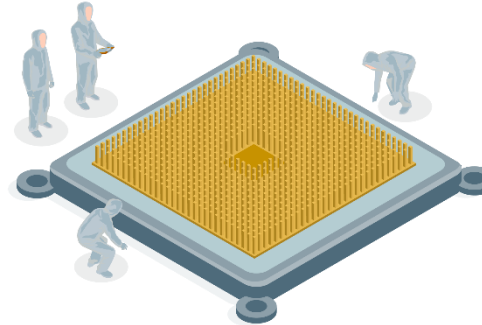
- QS68xx
- QS64xx



SOC Sales



ASIC Services



NRE /
Design Services



Distribution /
Technical Support

Top 20 Global Brands

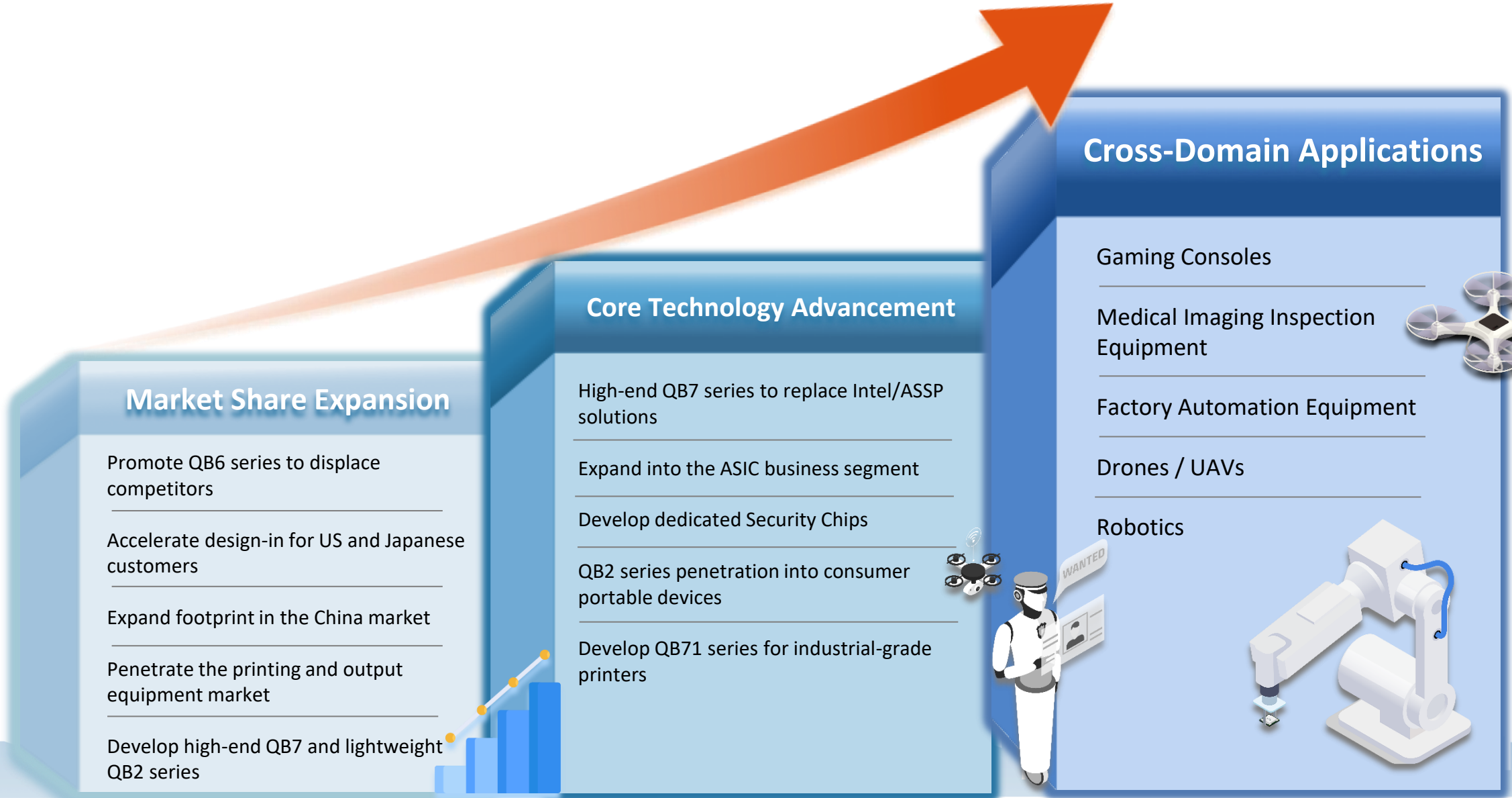
*United States:
X / L / K Company*

*China:
P / L1 / D Company
C / X1 / X2 Company
H / L2 / E Company*

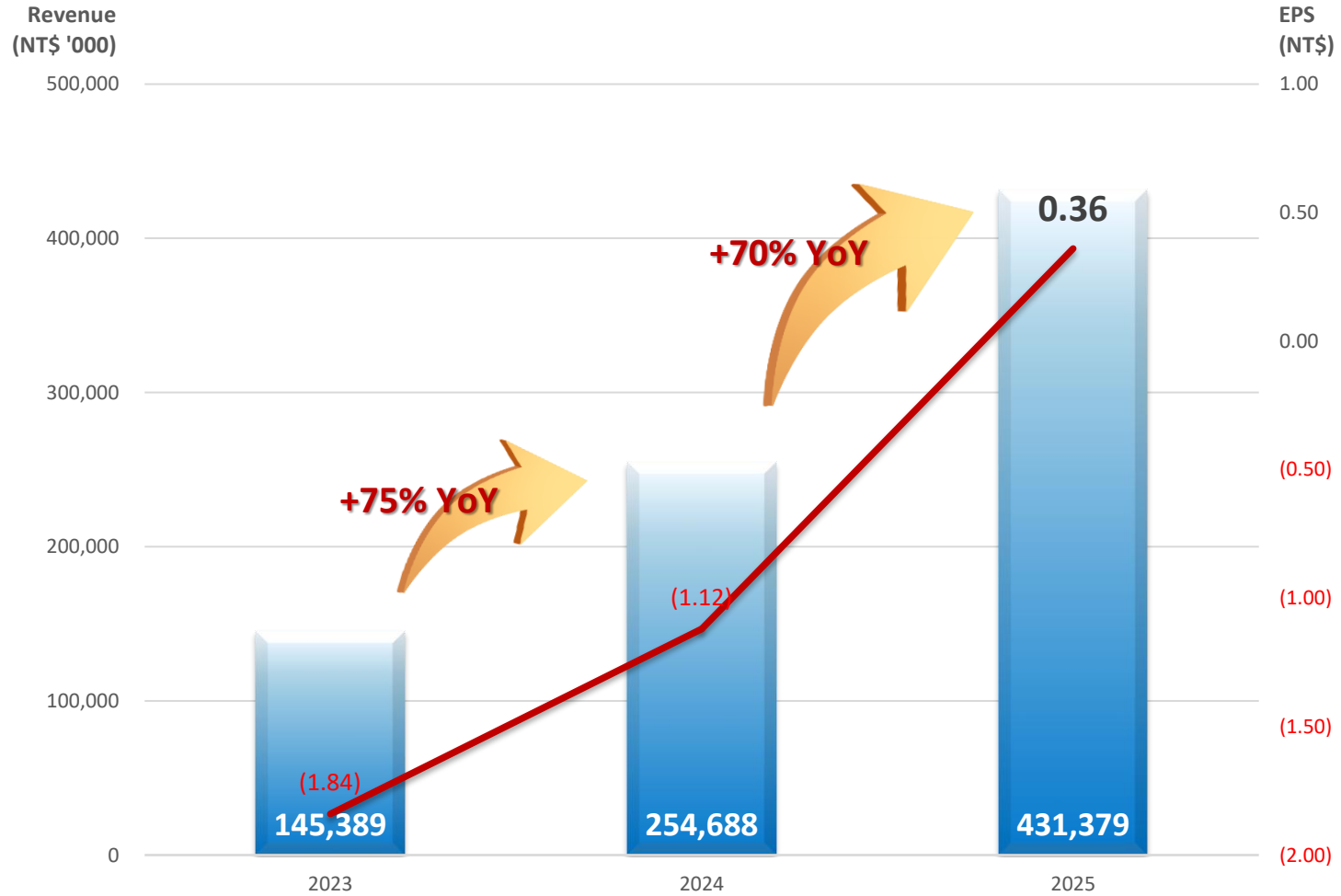
*Japan:
C / R / B Company
S1 / S2 / T Company
F / K / E Company*

*Taiwan:
G / A / H Company
C / L / P Company*

Accelerating Growth Drivers for QBit



Rapid Revenue Growth



2025 Revenue
NT\$ 431 M
(+70% YoY)

2025 EPS
NT\$ 0.36
(Gross Margin > 40%)

QBit Competitive Advantages



**Empowered by visionary partners,
QBit is ready to soar to new heights.**



